

REDPINE

Industrial Supplies Ltd.

Flow Line Products



SUPPLIER OF ...

- OCTG and Accessories
- Well Head Products
- Flow Line Products



Redpine Industrial Supplies Ltd.



Call Number:

+1 (604) 505-1941



Mail Id

info@redpineindsupplies.com

www.redpineindsupplies.com

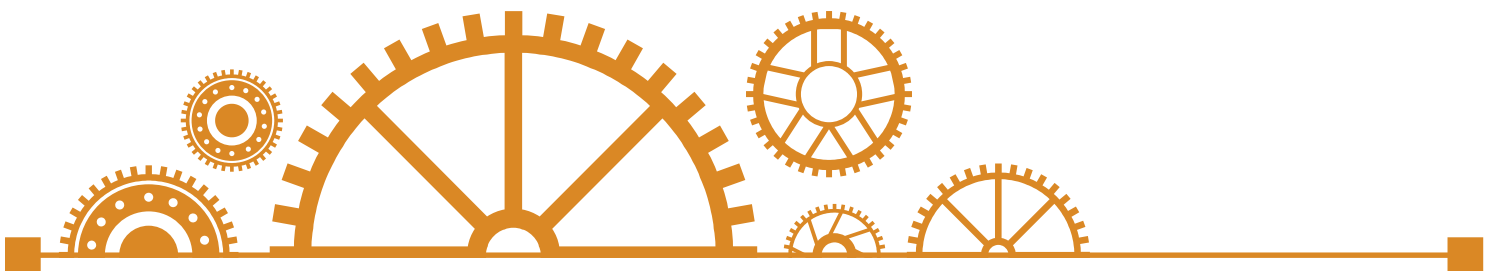
About Us

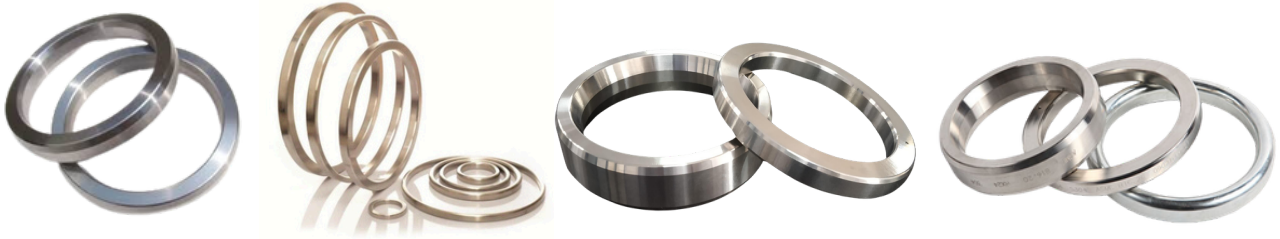
Redpine is promoted by a team of committed professionals with over 60 years of combined experience. We bring extensive expertise in contract manufacturing for the oil & gas industry, international sourcing and business operations.

Our manufacturing, global sourcing and quality control expertise will add value creation for every customer. We are committed to enriching customer experiences by consistently improving our quality, process and customer service.

Our mission is to create value for our customers through competitive pricing and Strategic Sourcing for oil & Gas industries.

We have supply partners in India, China, USA, UAE and Indonesia.





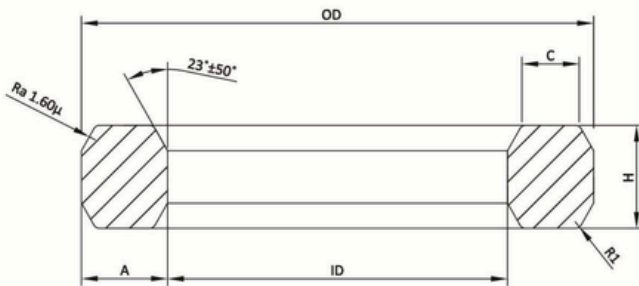
All Redpine Ring Type Joints are manufactured from traceable materials and are supplied to NACE specifications upon request. Each Ring Type Joint is identified by low stress stamping with style, ring number, API license number, material reference, Product Specification Level (PSL), a unique Dehu material identification number, and the month and year of manufacture. Such full and comprehensive traceability, from material source with mill certification to final supply, is an essential requirement in the company's strict quality assurance procedures and compliances API 6A requirements.

| MATERIAL | UNS NUMBER | MAXIMUM HARDNESS | | IDENTIFICATION |
|----------------------------|------------|------------------|----------------|----------------|
| | | BRINELL (BHN) | ROCKWELL (HRB) | |
| Soft Iron | -- | 90 | 56 | D |
| Low Carbon Steel | -- | 120 | 68 | S |
| 4-6% Chrome 1/2% Moly (F5) | K42544 | 130 | 75 | F5 |
| SS304 | S30400 | 160 | 82 | 304 |
| SS316 | S31600 | 160 | 82 | 316 |
| SS321 | S32100 | 160 | 82 | 321 |
| SS347 | S34700 | 160 | 82 | 347 |
| SS410 | S41000 | 160 | 82 | 410 |
| Alloy 600 | N06600 | 200 | 92 | N06600 |
| Alloy 625 | N06625 | 200 | 92 | N06625 |
| Alloy 800 | N08800 | 200 | 92 | N08800 |
| Alloy 825 | N08825 | 160 | 82 | N08825 |
| Alloy C276 | N10276 | 200 | 92 | N10276 |
| SMO 254 | S31254 | 180 | 89 | S31254 |
| Duplex | S31803 | 250 | 99 | S31803 |
| Super Duplex | S32760 | 200 | 92 | S32760 |
| Monel 400 | N04400 | 135 | 75 | N04400 |
| Titanium Gr. 2 | R50400 | 200 | 92 | R50400 |

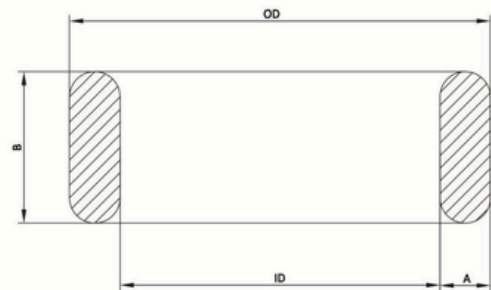
R Type



The R Type Ring Joint Gasket fits the round and flat bottom ring groove flange. Available in both oval or octagonal, both types are interchangeable on modern octagonal type grooved flanges.



R - Octagonal Gasket Style



R - Oval Gasket Style

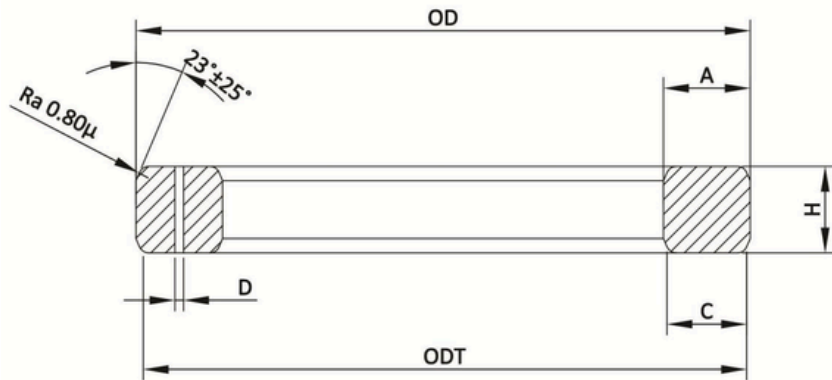
| Dimension Tolerances Inches (mm) | | |
|----------------------------------|----------------|--------------------------------|
| | API 6A | ASME B16.20 |
| A - Width of ring | ± 0.008 (0.20) | ± 0.008 (0.20) |
| B, H - Height of ring | ± 0.02 (0.50) | ± 0.051 /- 0.019 (+ 1.3/-0.50) |
| C - Width of flat | ± 0.008 (0.20) | ± 0.008 (0.20) |
| OD - Outer Diameter of ring | ± 0.007 (0.18) | ± 0.007 (0.18) |
| ID - Inner Diameter of ring | ± 0.007 (0.18) | ± 0.007 (0.18) |
| R1 - Radius | ± 0.002 (0.50) | ± 0.02 (0.50) |
| 23° Angle of sealing face | ± 0.50° | ± 0.50° |

BX Type



These basic shapes of the Ring Joint Gaskets are used in a variety of applications with pressures up to 20,000 PSI. The dimensions are standardized and they require specially grooved flanges on which a corresponding "R" or "BX" number is assigned for pipe size and pressure class for gasket identification. All BX sizes have a pressure relief hole to equalize pressure across sealing faces.

**BX Type
Ring Gasket**



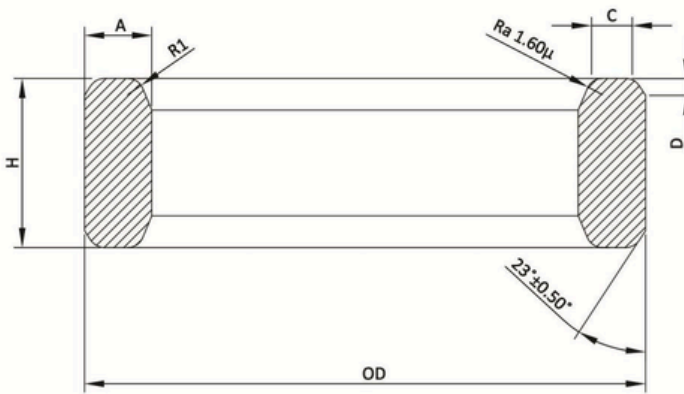
| Dimension Tolerances Inches (mm) | | |
|----------------------------------|------------------------------|------------------------------|
| | API 6A | ASME B16.20 |
| A - Width of ring | + 0.008/-0.00 (+ 0.20/-0.00) | + 0.008/-0.00 (+ 0.20/-0.00) |
| H - Height of ring | + 0.008/-0.00 (+ 0.20/-0.00) | + 0.008/-0.00 (+ 0.20/-0.00) |
| C - Width of flat | + 0.006/-0.00(+ 0.15/-0.00) | + 0.006/-0.00(+ 0.15/-0.00) |
| OD - Outer Diameter of ring | + 0.00/-0.006 (+ 0.00/-0.15) | + 0.00/-0.006 (+ 0.00/-0.15) |
| ODT - Outside diameter of flat | ± 0.002 (0.05) | ± 0.002 (0.05) |
| D - Hole Size | ± 0.02 (0.50) | ± 0.02 (0.50) |
| 23° Angle of sealing face | ± 0.25° | ± 0.25° |

RX Type



The RX has an increased height that the internal system pressure to energies and improves the seal as internal pressure increases. Some RX sizes have a pressure relief hole to equalize pressure on both sides of the sealing faces.

RX Type Ring Gasket



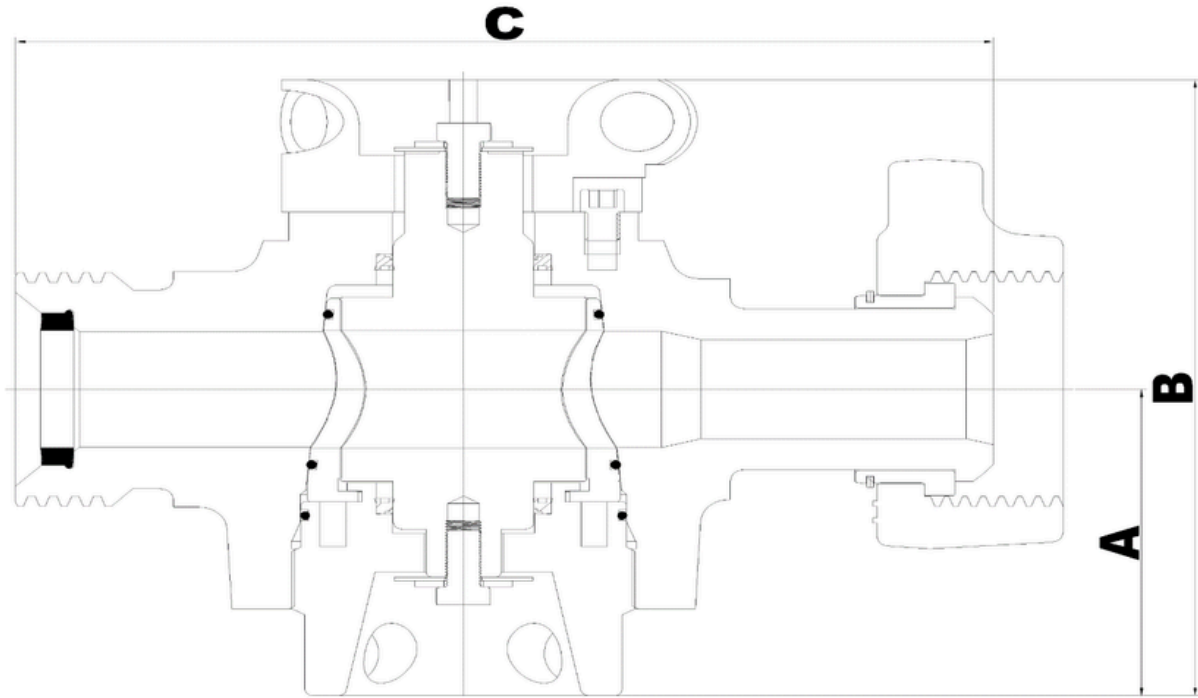
| Dimension Tolerances Inches (mm) | | |
|----------------------------------|--------------------------------|--------------------------------|
| | API 6A | ASME B16.20 |
| A - Width of ring | + 0.008/-0.00(+0.20/-0.00) | + 0.008/-0.00(+0.20/-0.00) |
| H - Height of ring | + 0.008/-0.00(+0.20/-0.00) | + 0.008/-0.00(+0.20/-0.00) |
| C - Width of flat | + 0.006/-0.00(+ 0.15/-0.00) | + 0.006/-0.00(+ 0.15/-0.00) |
| OD - Outer Diameter of ring | + 0.02/-0.00(+0.50/-0.00) | + 0.02/-0.00(+0.51/-0.00) |
| D - Height of outside bevel | + 0.00/-0.032(+0.00/-0.80) | + 0.00/-0.030(+0.00/-0.76) |
| R1 - Radius | ± 0.02 (0.50) | ± 0.02 (0.50) |
| 23° Angle of sealing face | ± 0.50° | ± 0.50° |

These plug valves are designed as quarter- turn isolation valves, enabling operators to isolate sections of a flowline or individual pumping units without shutting down the entire pumping system. Their compact footprint, simple operation and fast response make them ideal for demanding oilfield applications, while minimising internal flow disturbance and maintaining low pressure drop across the valve. Engineered for reduced operating torque, these valves provide smoother operation and improved ease of use in high-pressure environments.

Available in sizes ranging from 1" to 3" with working pressure up to 15,000 psi, these plug valves feature precision machined and ground components to ensure reliable sealing across a broad range of operating pressure. Critical sealing and wear areas are specially plated to enhance corrosion resistance, extend service life and deliver dependable performance in harsh operating conditions.

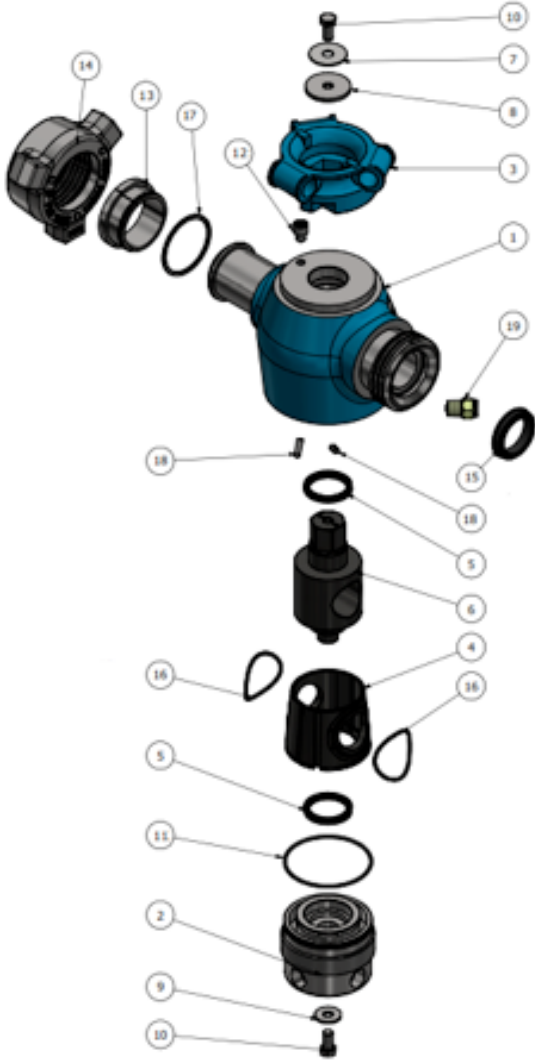


- Standard service is used up to 15000 psi and tested at 22500 psi.
- Sour service(H₂S) is used up to 10000 psi and tested at 15000 psi.
- Rugged construction with forged alloy steel body.
- Reliable performance at high pressure.
- Bottom entry design and easy maintenance.
- Valve parts are interchangeable with most major brands.
- Suitable for applications such as fracturing, cementing, acidizing and etc.
- Each valve is serialized.
- MTR and Test reports are available.
- Available in sizes 1" to 3" up to 15000 psi working pressure.



| Size | End Connection Type | Service | Working Pressure (psi) | Test Pressure (psi) | DIMENSIONS (inches) | | | Weight in lb (kg) |
|---------|---------------------|---------|------------------------|---------------------|---------------------|-------|-----------|-------------------|
| | | | | | A | B | C | |
| 2" x 1" | 1502 M X F | STD | 15000 | 22500 | 4.74 | 9.24 | 10.5 3 | 27.23 (60.0) |
| | | SOUR | 10000 | 15000 | | | | |
| 2" x 2" | 1502 M X F | STD | 15000 | 22500 | 5.41 | 10.67 | 13.88 | 87.40 (39.67) |
| | | SOUR | 10000 | 15000 | | | | |
| 3" x 3" | 1502 M X F | STD | 15000 | 22500 | 5.41 | 10.67 | 13.88 | 188 (85.26) |
| | | SOUR | 10000 | 15000 | | | | |

PLUG VALVE PART LIST



REPAIR KIT DETAILS

*** Marked Items are supplied as major repair kit for Plug Valves**

| ITEM | QTY. | DESCRIPTION |
|------|------|------------------------|
| 1 | 1 | Body |
| 2 | 1 | Bonnet |
| 3 | 1 | Handle Actuator |
| 4* | 1 | Metal seat |
| 5* | 2 | Plug Seal |
| 6* | 1 | Plug |
| 7 | 1 | Washer |
| 8 | 1 | Washer |
| 9 | 1 | Washer |
| 10 | 2 | Hex Bolt |
| 11* | 1 | O-ring |
| 12 | 1 | Allen Bolt |
| 13 | 1 | Segment Ring |
| 14 | 1 | Wing Nut |
| 15 | 1 | Packing Seal |
| 16* | 2 | Metal seat O-ring |
| 17 | 1 | Segment Retaining ring |
| 18 | 2 | Metal seat Guide Pin |
| 19 | 1 | Grease Fitting |



Hammer unions allow for quick connecting pipelines and flexible hose assemblies in the oil and gas industry . They are popularly used on onshore and offshore drilling rigs to transfer petroleum, gas, drilling mud, cement, water, air and many other media. our sourcing partners offers a comprehensive range of standard and sour gas Hammer Unions. Each union is throughly inspected to ensure long dependable service in the most extreme condition.

SPECIFICATIONS

- Range size: 1/2"-12"
- ASTM A-105 for a working pressure less than 6,000psi
- AISI 4130 for a working pressure greater than or equal to 6,000psi
- Meet the National Association of Corrosion Engineers Standard NACE MR-01-75
- Maximum cold working pressure: 15,000psi

Material

These unions are manufactured from steel forgings using materials appropriate to specific pressure ratings

Sour Service

These unions are available in H2S service and comply with the latest NACE specifications.

Interchangeability

All unions interchangeable with leading brands.

FEATURES

- Complete traceability
- Three lug nuts and self-locking ACME threads provide quick make-up and break-out
- Color coded for quick identification
- All unions provide pressure-tight & positive sealing for low-pressure services (500 to 2,000 PSI)
- The spherical surface male sub and angular surface female sub-form a metal-to-metal seal, the ball and tangent provides a perfect seal
- Fully interchangeable with most major brands of Hammer Unions.

End Connections




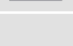





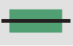


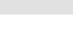

These unions offers products with various end connection options. API line pipe threads are standard, and butt weld ends are available upon request. Customers should specify the pipe schedule when placing their orders..

Low Temperature Service

These unions can be supplied for low temperature applications with suitable impact value testing.

Traceability

These unions supplied with full traceability documentation for each component.

| Fig. No. | Assembly Colour Key for Standard Service | Pressure Rating (psi) | | | | Nominal Pipe Size (in mm.) | | | | | | | | | | | |
|----------|---|-----------------------|--------|------------------|--------|----------------------------|-------|-------|----|-------|----|-----|-----|-----|-----|-----|-----|
| | | Standard Service | | Sour Gas Service | | 1" | 1 1/4 | 1 1/2 | 2 | 2 1/2 | 3 | 4 | 5 | 6 | 8 | 10 | 12 |
| | | Cold Working | Test | Cold Working | Test | 25 | 32 | 40 | 50 | 65 | 80 | 100 | 125 | 150 | 200 | 250 | 300 |
| 50 |  | 500 | 750 | NA | NA | | | | | | | | ✓ | | | | |
| 100 |  | 1,000 | 1,500 | NA | NA | | | | ✓ | ✓ | ✓ | ✓ | ✓ | ✓ | ✓ | | |
| 200 |  | 2,000 | 3,000 | NA | NA | ✓ | ✓ | ✓ | ✓ | ✓ | ✓ | ✓ | ✓ | ✓ | ✓ | ✓ | |
| 206 |  | 2,000 | 3,000 | NA | NA | ✓ | ✓ | ✓ | ✓ | ✓ | ✓ | | ✓ | ✓ | ✓ | | |
| 207 | | 2,000 | 3,000 | NA | NA | | | | | ✓ | ✓ | | ✓ | | | | |
| 211 |  | 2,000 | 3,000 | NA | NA | | | ✓ | | ✓ | | | | | | | |
| 400 |  | 2,500 | 3,750 | 2,500 | 3,750 | | | | | | | | ✓ | ✓ | ✓ | ✓ | |
| 400 |  | 4,000 | 6,000 | 4,000 | 6,000 | | | | ✓ | | ✓ | ✓ | | | | | |
| 600 |  | 6,000 | 9,000 | NA | NA | ✓ | | | ✓ | | ✓ | ✓ | | | | | |
| 602 |  | 6,000 | 9,000 | 6,000 | 9,000 | ✓ | ✓ | ✓ | ✓ | | ✓ | ✓ | | | | | |
| 1002 |  | 10,000 | 15,000 | 7,500 | 11,250 | ✓ | ✓ | ✓ | ✓ | | ✓ | ✓ | ✓ | | | | |
| 1003 |  | 10,000 | 15,000 | 7,500 | 11,250 | | | | ✓ | | ✓ | ✓ | ✓ | | | | |
| 1502 |  | 15,000 | 22,500 | 10,000 | 15,000 | ✓ | | | ✓ | | ✓ | ✓ | ✓ | | | | |
| 2002 |  | 20,000 | 30,000 | NA | NA | | | | ✓ | | ✓ | ✓ | | | | | |
| 2202 |  | NA | NA | 15,000 | 22,500 | | | | ✓ | | ✓ | ✓ | | | | | |



HOSE UNIONS



Fig 206

- These Hose Unions are manufactured from steel Forgings using materials appropriate to specific pressure ratings up to 400 psi.
- Fig 206 'O' ring for improved sealing, barb style connection with ss snap ring for safety.

BLINDS AND TEST PLUGS

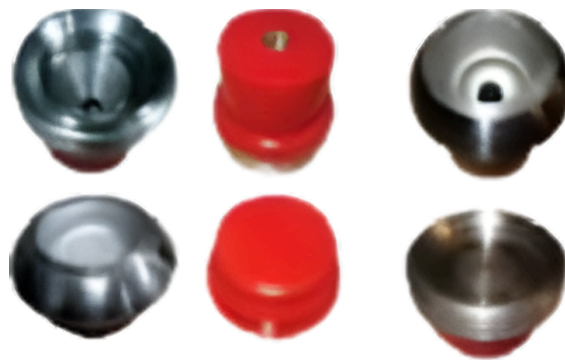


Fig 602 and Fig 1502

- Male and Female Blind with or without NPT ports.
- Available Size 1" to 12" with Fig 602 and Fig 1502.
- Available in Standard and Sour Service.
- Test plug are available as per the customer's required connections.



Swivel Joints are manufactured both for standard service & sour service. Long sweep swivel joints are designed generally from 6000 PSI CWP to 20,000 PSI CWP, both for standard and sour service and ensure better flow characteristics. Smooth and round bore design keeps pressure drop low and minimizes turbulence.

Long sweep sour service swivel joints are manufactured in accordance with NACE standard, MR-01 – 75 (Latest).

Swivel Joints Code Red – Long Radius

- Swivel Joints offers extra high-pressure long radius Swivel Joints, Figure 1502 & 1002, In 2”, 3” & 4 “ Sizes.
- Recommended for test line, fracturing, cementing & well servicing up to 15000 PSI CWP.
- Precision machined from forged alloy materials heat-treated for longer service.
- Three ball-bearing race bases that more evenly share moment loads.
- Optimal combination of core strength and case hardness, without sacrificing ductility.
- Available Styles No. 10 to Styles No. 100
- Available in both Standard and Sour Services.

Quick Reference Chart

| Models | Color-Coding | Cold Working Pressure (psi) | Material | End Connections | Sizes | | | | | | | | Notes | |
|---------------------------------|--------------|-----------------------------|--------------|--------------------------|-------|----------|-------|----------|----------|-------|----------|----------|-------|---|
| | | | | | 3/4 | 1 | 1-1/4 | 1-1/2 | 2 | 2-1/2 | 3 | 4 | | |
| High-Pressure Swivel Joints BSR | Dark Blue | 3,000 | Carbon Steel | Threaded | • | • | • | • | • | • | • | • | • | 1 |
| | Silver | 6,000 | | Threaded | • | • | • | • | • | • | • | • | • | 1 |
| Long Radius Swivel Joints | Olive Green* | 10,000 | Alloy Steel | Figure 1502 Union | | Sour Gas | | Sour Gas | Sour Gas | | Sour Gas | Sour Gas | 2 | |
| | Black | 10,000 | Alloy Steel | Female Line Pipe Threads | | | | | • | | | | 3 | |
| | Red* | 15,000 | Alloy Steel | Figure 1502 Union | | • | | • | • | | • | • | 1 | |

Swivel Joints Code Silver – Short Radius

- High-pressure swivel joints 6000 PSI CWP in 1", 2" & 3" with LPT.
- For test lines, fracturing, acidizing, & well servicing up to 6000 PSI.
- Swivel joints can be custom-configured in any style.
- Material traceability reports are included at no extra charge.



Style 10
3 Swivels, 2 Elbows



Style 20
1 Swivel



Style 30
1 Swivel, 1 Elbow



Style 40
1 Swivel, 2 Elbows



Style 50
2 Swivels, 2 Elbows



Style 60
2 Swivels, 1 Elbow



Style 70
2 Swivels, 3 Elbows



Style 80
3 Swivels, 3 Elbows

- Standard Swivel Joints are provided with API line pipe threads.
- Heavy duty hex head style ball loading plug.
- Available for standard service.



- Extra High-pressure Cementing / Circulating Hose Loops, Fig. 1502, 1002 & 602 in 2" & 3" sizes of length 10 foot and 12 foot.
- For test lines, fracturing, acidizing, cementing & well servicing up to 15000 & 6000 PSI CWP.
- Hose loops can be custom-ordered in non-standard lengths.
- Manufactured to the highest quality standards in the industry.
- Available in both Standard and Sour Service for Fig. 1502 & 1002 and Standard service for 602 (Silver Code).
- For Fig. 602 (Silver Code) available end connections, one wing union and two style 50 or style 10 or one Style 50 and Style 10 swivel joints with threaded ends.
- For Fig. 1502 one wing union and one each style 50 and style 10 swivel joints with integral wing union ends.
- Four wing unions and two style 50 or 10 swivel joints with integral wing union ends.
- Four wing unions and two style 50 or style 10 swivel joints.

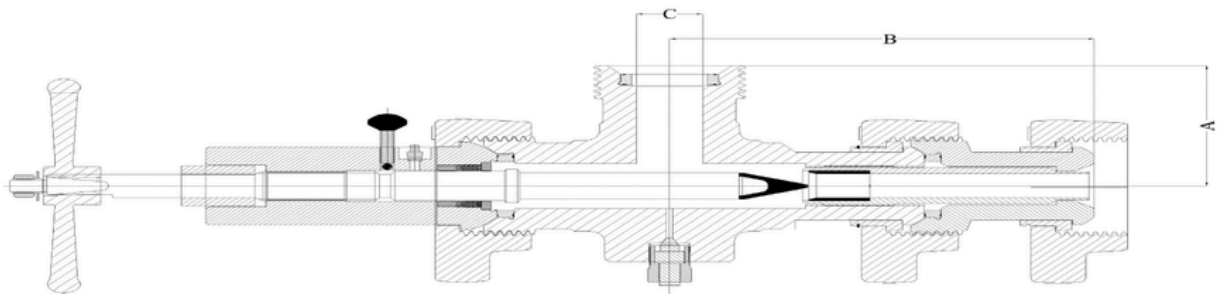


ADJUSTABLE CHOKE



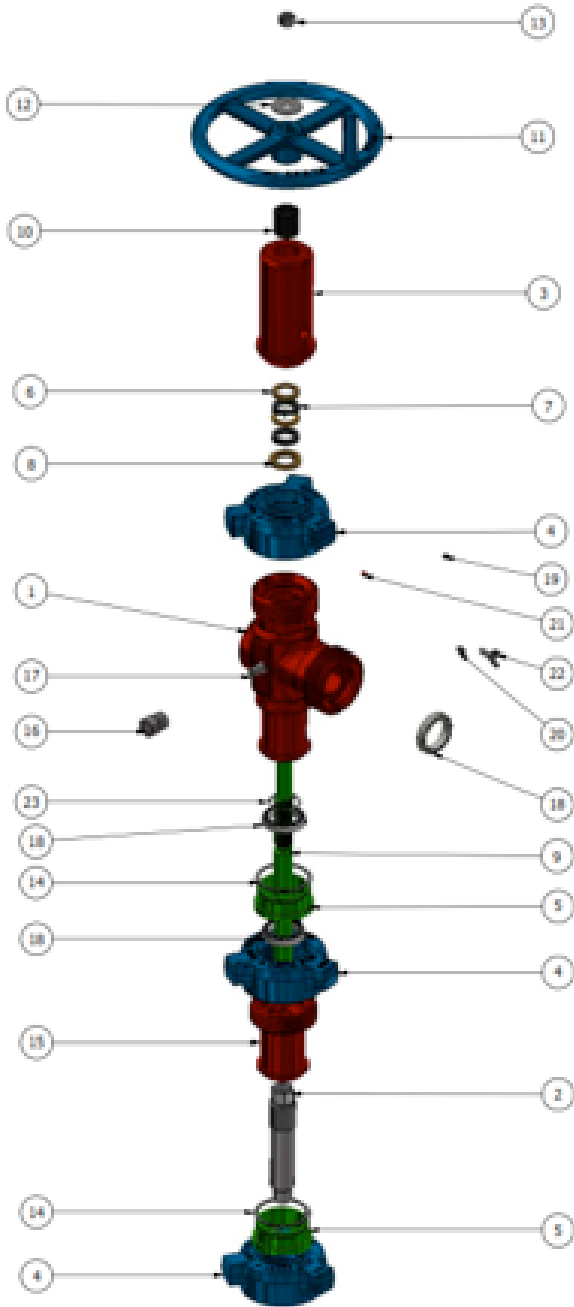
POSITIVE CHOKE

- Standard service is used up to 15000 psi and tested at 22500 psi.
- Sour service(H₂S) is used up to 10000 psi and tested at 15000 psi.
- Hammer Union end connections.
- Forged alloy steel body, stainless steel and tungsten carbide parts.
- Parts are interchangeable with major brands.
- Suitable for a broad range of operations including wellhead and well tastings.



| Sizes | Services | Working Pressure psi | Seat | Type | A | B | C | Wt. Lb (Kg) |
|-------|----------|----------------------|----------------------------------|------------|-------|--------|-------|------------------|
| 2" | Std | 15000 | 3/4", 3/4" full 1" full | Adjustable | 5.00" | 11.66" | 1.88" | 63.00 (29.0) |
| | Sour | 10000 | | | | | | |
| 2" | Std | 15000 | 3/4", 3/4" full 1" full | Positive | 5.00" | 11.66" | 1.88" | 103.00 (46.7) |
| | Sour | 10000 | | | | | | |
| 3" | Std | 15000 | 2" half & full | Adjustable | 8.00" | 8.00" | 2.75" | 132.30 (60.0) |
| | Sour | 10000 | | | | | | |

CHOKE PART LIST













| Item | Qty. | Description |
|------|------|--------------------------|
| 1 | 1 | Body |
| 2* | 1 | Bean Body |
| 3 | 1 | Bonnet |
| 4 | 3 | Nut |
| 5 | 2 | Segment Ring |
| 6* | 2 | Back Spacer |
| 7* | 2 | Lip seal |
| 8* | 1 | Front Spacer |
| 9 | 1 | Stem Body |
| 10 | 1 | Valve Indicator |
| 11 | 1 | Hand Wheel |
| 12 | 1 | Washer |
| 13 | 1 | Hex Nut |
| 14 | 2 | Retainer Ring |
| 15 | 1 | Saver |
| 16 | 1 | Pressure relief valve |
| 17 | 1 | Test Plug |
| 18 | 3 | Seal Ring |
| 19 | 1 | Hexagon socket screw set |
| 20 | 1 | Grease Nipple |
| 21 | 1 | Nylon Ball |
| 22 | 1 | Wing screw |
| 23 | 1 | Internal snap ring |










REPAIR KIT DETAILS

*** Marked Items are supplied as major repair kit for Choke**



Integral Fitting Specifications

| Nom. Size in. | | 1 | 1.5 | 2 | | 3 | | 4 | | | | |
|------------------|---|-------|-------|------|-------|-------|------|-------|-------|------|-------|-------|
| Figure No. | | 1502 | 1502 | 602 | 1502 | 2002 | 602 | 1502 | 2002 | 602 | 1002 | 1502 |
| CWP (PSI) | | 15000 | 15000 | 6000 | 15000 | 15000 | 6000 | 15000 | 15000 | 6000 | 10000 | 15000 |
| Long sweep Elbow |  F X M Wt. (Kg.) | - | - | 10 | 12.6 | - | 24.5 | 22.9 | - | 40.4 | 40.4 | - |
| |  M X M Wt. (Kg.) | - | - | 12.2 | 15.4 | - | 30 | 29.5 | - | 46.3 | 46.3 | - |
| Elbows |  F X M Wt. (Kg.) | - | - | 12.4 | 14.7 | - | 45.6 | 46.3 | 100 | - | - | - |
| |  M x M Wt. (Kg.) | - | - | 16.3 | 18.5 | - | 52.2 | 54.9 | - | - | - | - |
| |  F x F Wt. (Kg.) | - | - | 8.2 | 10.9 | - | 38.1 | 39.5 | - | - | - | - |
| Tees |  F x F x F Wt. (Kg.) | 13.2 | 15.4 | 12 | 13.2 | 14.5 | 50.8 | 51.7 | 99.8 | 44.9 | 45.8 | 90.7 |
| |  F x F x M Wt. (Kg.) | 14.4 | 18 | 14.2 | 17 | 19 | 56.2 | 58 | 115 | 51.7 | 52.6 | 106 |
| |  F x M x F Wt. (Kg.) | 14.4 | 18 | 14.2 | 17 | 19 | 56.2 | 58 | 115 | 51.7 | 52.6 | 106 |
| |  F x M x M Wt.(Kg.) | 15.9 | 21.1 | 16.3 | 20.9 | 23.6 | 61.7 | 64.4 | 129 | 57.6 | 59 | 122 |
| |  M x M x F Wt. (Kg.) | 15.9 | 21.1 | 16.3 | 20.9 | 23.6 | 61.7 | 64.4 | 129 | 57.6 | 59 | 122 |

| Nom. Size in. | | 1 | 1.5 | 2 | | | 3 | | | 4 | | |
|---------------|--|-------|-------|------|-------|-------|------|-------|-------|------|-------|-------|
| Figure No. | | 1502 | 1502 | 602 | 1502 | 2002 | 602 | 1502 | 2002 | 602 | 1002 | 1502 |
| CWP (PSI) | | 15000 | 15000 | 6000 | 15000 | 15000 | 6000 | 15000 | 15000 | 6000 | 10000 | 15000 |
| Crosses |  F x F x F x F Wt. (Kg.) | - | 31.8 | 26.3 | 26.8 | - | 71.2 | 61.7 | - | 65.3 | 65.5 | - |
| |  F x F x M x F Wt. (Kg.) | - | 35 | 28.1 | 30 | - | 76.2 | 80.7 | - | 71.2 | 71.2 | - |
| |  F x F x M x M Wt. (Kg.) | - | 37.6 | 30.4 | 33.1 | - | 81.6 | 83 | - | 77.1 | 77.1 | - |
| |  F x M x M x F Wt. (Kg.) | - | 37.6 | 30.4 | 33.1 | - | 81.6 | 83 | - | 77.1 | 77.1 | - |
| |  F x M x M x M Wt. (Kg.) | - | 40.4 | 32.7 | 36.3 | - | 87.1 | 89.4 | - | 83 | 83 | - |
| |  M x M x M x M Wt. (Kg.) | - | 142.6 | 35 | 39.5 | - | 92.1 | 95.7 | - | 89.4 | 89.4 | - |
| Laterals |  M x F x F Wt. (Kg.) | 26.3 | 27.9 | 21.5 | 24.3 | - | - | 40.1 | - | 53.1 | 78.9 | 141 |
| |  F x F x F Wt. (Kg.) | 25.4 | - | - | - | - | - | 40.9 | - | - | - | - |
| Wyes |  M x F x F Wt. (Kg.) | - | 20 | 12.7 | 12.2 | 12.7 | - | - | - | - | - | - |

- Fittings feature high-quality forged construction with integral union end connections for high strength.
- Integral fittings come with full material traceability.
- Our Sourcing partners also supplies Integral fittings in customized end connections.

A Pup Joint is a short casing or tubing used for handling production tubing assemblies and for spacing out full length tubing and casing strings.

Pup Joints Available

Pin x Box

Pin x Pin

Available Lengths

2', 3', 4', 5', 6', 8', 10' & 12'

Standard length tolerance

Available API Grade :

- H40
- J55
- K55
- N80
- R95
- L80
- C90
- T95
- C110
- P110
- Q125



Integral Pup Joint



NPST Pup Joint



- Our sourcing partners offers 2” & 3” 15000 PSI (Code Red) Integral alloy steel pup joints are available in lengths up to 12 feet.
- They feature an entirely one-piece, upset-forged construction, made for use where welded or threaded connections are not recommended.
- These pup joints can be used with the complete range of high-pressure and abrasive oilfield fluids.
- Available in both standard and sour service.

| Wt. | lb/kg | lb/kg | lb/kg | lb/kg | lb/kg | lb/kg | lb/kg |
|--------------------|-----------|-----------|------------|------------|------------|------------|-------------|
| Size | 2.0” | 3.0” | 4.0” | 5.0” | 6.0” | 8.0” | 10.0” |
| 2” Integral | 34 / 15.4 | 42 / 19.1 | 50 / 22.7 | 60 / 27.2 | 71 / 32.2 | 80 / 36.3 | 98 / 44.5 |
| 3” Integral | 69 / 31.2 | 91 / 41.3 | 113 / 51.3 | 136 / 61.7 | 158 / 71.7 | 191 / 86.6 | 237 / 107.5 |
| 2” NPST | 31 / 14.1 | 38 / 17.2 | 45 / 20.4 | 52 / 23.6 | 59 / 26.8 | 72 / 32.7 | 86 / 39.0 |
| 3” NPST | 57 / 25.9 | 72 / 32.7 | 87 / 39.5 | 103 / 46.7 | 118 / 53.5 | 148 / 67.1 | 178 / 80.7 |

- Non-pressure Seal Pup joints are available in 1”, 2” & 3” nominal sizes.
- These Pup joints are 100% hydrostatically tested at 1.5 times the rated cold working pressure.
- Standard lengths range from 1 foot up to 12 feet at cold working pressure, 10000 PSI (Sour) and 15000 PSI (Standard).
- Non-Standard lengths are available with minimum lead time.

Couplings are short subassemblies used to enable two components with the same connection and size to be connected. Couplings are also known as loose coupling and spare coupling..

Size Range

OD: 2 3/8” to 20”.

Thread Connection 8RD, BTC, API.

Available API Grade :

- H40
- J55
- K55
- N80
- R95
- L80
- C90
- T95
- C110
- P110
- Q125



Our extensive range of high-performance couplings is precision-engineered and crafted from API-grade coupling stock, meticulously sourced from trusted seamless mills. Each product is designed to meet the highest standards of reliability and durability, ensuring seamless operation in demanding applications.

| Tubing Couplings | |
|-------------------------|--|
| Diameters | 2 3/8" - 4 1/2" |
| Grades | J55, L80, N80, P110 |
| Connections | NUE, EUE |
| Other Options | <ul style="list-style-type: none"> • Special clearance |
| | <ul style="list-style-type: none"> • Bevel one end or both ends |
| | <ul style="list-style-type: none"> • Seal ring couplings (modified) |

| Casing Couplings | |
|-------------------------|--|
| Diameters | 4 1/2" - 20" |
| Grades | J55, K55, N80, L80, P110, Q125 |
| Connections | BTC , LTC , STC |
| Other Options | <ul style="list-style-type: none"> • Crossover couplings |
| | <ul style="list-style-type: none"> • Seal ring couplings (Modified) |

Casing Coupling Packing Standard



| SIZE (inch) | TYPE | T.L. Coupling (mm) | OD | Coupling Weight in KG. | QTY PER BOX | NT.WT/ BOX KG. | NT.WT/ BOX LBS | GR.WT/ BOX KG. | GR.WT/ BOX LBS |
|-------------|------|--------------------|--------|------------------------|-------------|----------------|----------------|----------------|----------------|
| 4 1/2 | STC | 158.75 | 133.35 | 5.24 | 343 | 1797 | 3962 | 1847 | 4072 |
| 5 | STC | 165.1 | 147.32 | 6.43 | 294 | 1890 | 4168 | 1940 | 4277 |
| 5 1/2 | STC | 171.45 | 160.02 | 7.34 | 252 | 1849 | 4078 | 1899 | 4187 |
| 7 | STC | 184.15 | 200 | 10.88 | 200 | 2176 | 4797 | 2226 | 4907 |
| 7 5/8 | STC | 190.5 | 215.9 | 12.16 | 150 | 1824 | 4021 | 1874 | 4131 |
| 8 5/8 | STC | 196.85 | 244.8 | 15.62 | 112 | 1749 | 3857 | 1799 | 3966 |
| 9 5/8 | STC | 196.85 | 269.88 | 17.85 | 112 | 1999 | 4407 | 2049 | 4517 |
| 10 3/4 | STC | 203.2 | 298.45 | 20.58 | 63 | 1296 | 2858 | 1346 | 2967 |
| 13 3/8 | STC | 203.2 | 365.12 | 25.42 | 54 | 1372 | 3026 | 1422 | 3135 |
| 16 | STC | 228.6 | 431.8 | 34.33 | 30 | 1029 | 2271 | 1079 | 2379 |
| 18 5/8 | STC | 288.6 | 508 | 53.33 | 16 | 853 | 1881 | 903 | 1991 |
| 20 | STC | 228.6 | 533.4 | 42.81 | 16 | 684 | 1510 | 734 | 1618 |

Casing Coupling Packing Standard



| SIZE (inch) | TYPE | T.L. Coupling (mm) | OD | Coupling Weight in KG. | QTY PER BOX | NT.WT/ BOX KG. | NT.WT/ BOX LBS | GR.WT/ BOX KG. | GR.WT/ BOX LBS |
|-------------|------|--------------------|--------|------------------------|-------------|----------------|----------------|----------------|----------------|
| 4 1/2 | LTC | 177.8 | 133.35 | 5.96 | 294 | 1752 | 3862 | 1802 | 3973 |
| 5 | LTC | 196.85 | 147.32 | 7.86 | 245 | 1926 | 4246 | 1976 | 4356 |
| 5 1/2 | LTC | 203.2 | 160.02 | 8.92 | 216 | 1927 | 4248 | 1977 | 4358 |
| 7 | LTC | 228.6 | 200 | 13.92 | 150 | 2088 | 4603 | 2138 | 4713 |
| 7 5/8 | LTC | 234.95 | 215.9 | 15.63 | 125 | 1954 | 4308 | 2004 | 4418 |
| 8 5/8 | LTC | 254 | 244.8 | 21.67 | 80 | 1734 | 3823 | 1784 | 3933 |
| 9 5/8 | LTC | 266.7 | 269.88 | 25.45 | 80 | 2036 | 4489 | 2086 | 4599 |

Casing Coupling Packing Standard



| SIZE (inch) | TYPE | T.L. COUPLING (mm) | OD | COUPLING WEIGHT in KG. | QTY PER BOX | NT.WT / BOX | NT.WT / BOX LBS | GR. WT / BOX | GR. WT / BOX LBS |
|-------------|------|--------------------|--------|------------------------|-------------|-------------|-----------------|--------------|------------------|
| 7 | BTC | 254 | 200 | 13.98 | 150 | 2097 | 4623 | 2147 | 4733 |
| 7 5/8 | BTC | 254 | 215.9 | 15.82 | 125 | 1978 | 4361 | 2028 | 4471 |
| 8 5/8 | BTC | 269.88 | 244.8 | 20.86 | 80 | 1669 | 3679 | 1719 | 3790 |
| 9 5/8 | BTC | 269.88 | 269.88 | 23.16 | 80 | 1853 | 4085 | 1903 | 4195 |
| 10 3/4 | BTC | 269.88 | 298.45 | 25.74 | 54 | 1390 | 3064 | 1440 | 3175 |
| 13 3/8 | BTC | 269.88 | 365.12 | 31.77 | 54 | 1716 | 3783 | 1766 | 3893 |
| 16 | BTC | 269.88 | 431.8 | 40.28 | 30 | 1208 | 2663 | 1258 | 2773 |
| 18 5/8 | BTC | 269.88 | 508 | 62.68 | 16 | 1003 | 2211 | 1053 | 2321 |
| 20 | BTC | 269.88 | 533.4 | 50.1 | 16 | 802 | 1768 | 852 | 1878 |

Tubing Coupling Packing Standard

| SIZE (inch) | TYPE | T.L. COUPLING (mm) | OD | COUPLING WEIGHT in KG. | QTY PER BOX | NT.WT / BOX | NT.WT / BOX LBS | GR. WT / BOX | GR. WT / BOX LBS |
|-------------|------|--------------------|--------|------------------------|-------------|-------------|-----------------|--------------|------------------|
| 2 3/8 | EUE | 123 | 77.8 | 1.55 | 1144 | 1773 | 3909 | 1823 | 4019 |
| 2 7/8 | EUE | 133 | 93.8 | 2.4 | 792 | 1901 | 4191 | 1951 | 4301 |
| 3 1/2 | EUE | 146 | 114.8 | 4.1 | 448 | 1837 | 4050 | 1887 | 4160 |
| 4 1/2 | EUE | 158 | 141.3 | 6.05 | 294 | 1779 | 3922 | 1829 | 4032 |
| 2 3/8 | NUE | 107 | 73.02 | 1.28 | 1144 | 1464 | 3228 | 1514 | 3338 |
| 2 7/8 | NUE | 130 | 88.9 | 2.34 | 800 | 1872 | 4127 | 1922 | 4237 |
| 3 1/2 | NUE | 142 | 107.95 | 3.71 | 448 | 1662 | 3664 | 1712 | 3774 |
| 4 1/2 | NUE | 155 | 132.08 | 4.89 | 343 | 1677 | 3697 | 1727 | 3807 |

Pup Joint Packing Standard

| SR. NO. | SIZE | Length | PALLET SIZE | QTY (Nos) | NT WT. KG. | NT WT. LBS |
|---------|--------|--------|-------------|-----------|------------|------------|
| 1 | 2 3/8" | 2FT | 700 X 700 | 80 | 504 | 1111 |
| 2 | 2 3/8" | 4FT | 1300 X 700 | 80 | 744 | 1640 |
| 3 | 2 3/8" | 6FT | 1900 X 700 | 64 | 928 | 2046 |
| 4 | 2 3/8" | 8FT | 2500 X 700 | 56 | 1050 | 2315 |
| 5 | 2 3/8" | 10FT | 3100 X 700 | 56 | 1395 | 3075 |
| 6 | 2 7/8" | 2FT | 700 X 700 | 70 | 606 | 1336 |
| 7 | 2 7/8" | 4FT | 1300 X 700 | 70 | 1050 | 2315 |
| 8 | 2 7/8" | 6FT | 1900 X 700 | 49 | 1026 | 2262 |
| 9 | 2 7/8" | 8FT | 2500 X 700 | 49 | 1152 | 2540 |
| 10 | 2 7/8" | 10FT | 3100 X 700 | 42 | 1234 | 2720 |
| 17 | 3 1/2" | 2FT | 700 X 700 | 60 | 769 | 1695 |
| 18 | 3 1/2" | 4FT | 1300 X 700 | 60 | 1309 | 2886 |
| 19 | 3 1/2" | 6FT | 1900 X 700 | 48 | 1443 | 3181 |
| 20 | 3 1/2" | 8FT | 2500 X 700 | 42 | 1624 | 3580 |
| 21 | 3 1/2" | 10FT | 3100 X 700 | 36 | 1706 | 3761 |
| 22 | 4 1/2" | 2FT | 700 X 700 | 45 | 492 | 1085 |
| 23 | 4 1/2" | 4FT | 1300 X 700 | 40 | 923 | 2035 |
| 24 | 4 1/2" | 6FT | 1900 X 700 | 35 | 1099 | 2423 |



| Flow Couplings | |
|----------------|------------------------------|
| Diameter | 2 3/8" , 2 7/8" , 3 1/2" |
| Grade | J-55, L-80, N-80 (Q), P-110 |
| Connections | EUE, LTC, STC, BTC |
| Lengths | 2' , 3' , 4' , 6' , 8' , 10' |

| Blast Joints | |
|-----------------------------|--|
| Diameter | 2 3/8" , 2 7/8" , 3 1/2" , 4 1/2" |
| Grade | J-55, L-80, N-80 (Q), P-110 |
| Connections | API - EUE, P x P, B x P |
| Lengths | 3' , 4' , 5' , 6' , 10' , 12' |
| Weight | Standard, and heavy walls available upon request |
| Product Specification Level | PSL, PSL2, PSL3 |
| Other options | Longer than 12' upon request |

| Cross Over | |
|-------------|-----------------------------|
| Diameter | 2 3/8" - 9 5/8" |
| Grade | J-55, L-80, N-80 (Q), P-110 |
| Connections | EUE, LTC, BTC |
| Lengths | 10" , 12" , 14" , 16" , 18" |



**200-7404 KING GEORGE BLVD.
SURREY BC V3W 1N6
CANADA**

